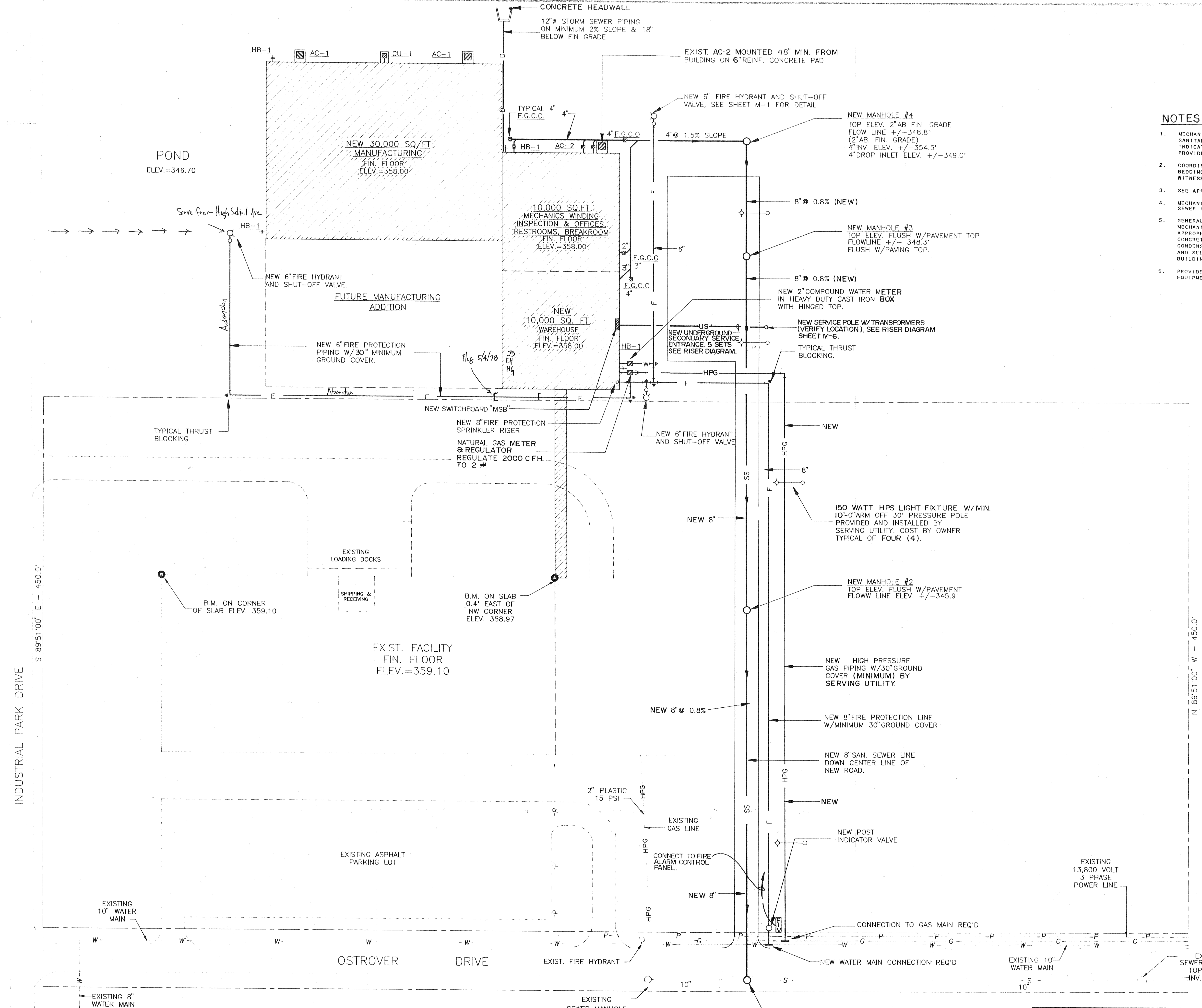
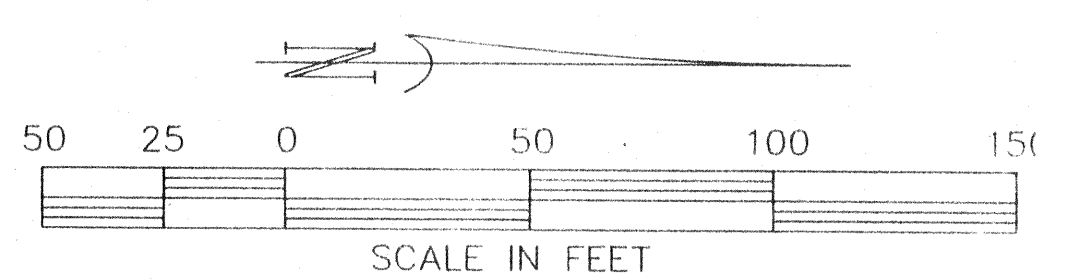


NO.	DATE	REVISION



- NOTES: MECHANICAL**
- MECHANICAL CONTRACTOR SHALL PROVIDE AND INSTALL ALL WATER, SANITARY AND STORM SEWER, AND NATURAL GAS PIPING SITE UTILITIES AS INDICATED AND SPECIFIED. COORDINATE WITH SERVING UTILITIES TO PROVIDE ALL TAPS AND CONNECTIONS AND PAY ALL FEES, PERMIT, ETC.
 - COORDINATE INSTALLATION OF ALL UTILITIES WITH ENGINEER SUCH THAT BEDDING OF ALL PIPING CAN BE VERIFIED AND ALL PIPING TESTS CAN BE WITNESSED PRIOR TO BACKFILLING.
 - SEE APPROPRIATE DETAILS ON SHEET M-1.
 - MECHANICAL CONTRACTOR SHALL FIELD VERIFY ALL EXISTING SANITARY SEWER INVERTS AND GRADES.
 - GENERAL CONTRACTOR SHALL COORDINATE SIZE AND LOCATION OF ALL MECHANICAL CONCRETE PADS AND SHALL INSTALL SAME. SEE DETAILS. APPROPRIATE TO INSTALLATION. ALL CONCRETE SHALL BE 3000 P.S.I. CONCRETE SLABS TO EXTEND MINIMUM 15" AND 18" BEYOND AC-1 & 2 AND CONDENSING UNIT EQUIPMENT BACK AND SIDES RESPECTIVELY. CONDENSING AND SELF-CONTAINED UNITS TO BE INSTALLED 24" AND 48" FROM BUILDING, RESPECTIVELY.
 - PROVIDE EXPANSION JOINT AT BUILDING PERIMETER AND SLOPE ALL EQUIPMENT CONCRETE PAD 1/8" PER FOOT AWAY FROM STRUCTURE.



SITE UTILITIES PLAN

		ANDERSON ENGINEERS, P.A.		20,000 S.F. & 30,000 S.F. WAREHOUSE & MANUFACTURING ADDITIONS FOR AMERICAN FABRICS CO.	
		DRAWN A.G.	CHECKED G.S.C.	JOB NO. 114C2001	DATE MARCH 0992
APPROVED		SCALE 1" = 40'		90F19	